

PILAR / VUB - Brussels

Sensorial Skins presents investigations into the sculptural potential of organic materials. AnneMarie Maes transforms them into fabrics, membranes and biofilms. She thus creates complex surfaces that arouse our senses through their materiality, their texture, their colours and smells.

The ever-evolving skins shrink, harden or soften in response to humidity, temperature and other parameters of the environment. Sometimes they emerge from the interaction between the artist and microorganisms. Sometimes they result from processes reminiscent of alchemical practices, grounded in fieldwork and scientific methodology. The skins become interfaces between the human and the non-human, the macroscopic and the microscopic. They transform the natural into the cultural realm.

Sensorial Skins plunges the viewer into earthly colours, materials and textures. It is the first chapter of a double exhibition that continues with Woven by Nature, taking place at iMAL, Art Center for Digital Cultures & Technology, from 29 April to 16 May.

SEN & SO RIAL SKINS

an exhibition by AnneMarie Maes

Concept & Artworks
Curation
Technical Support
Production

AnneMarie Maes
Camilla Colombo, Ohme
Erland Jacobsen
SO-ON vzw



nl

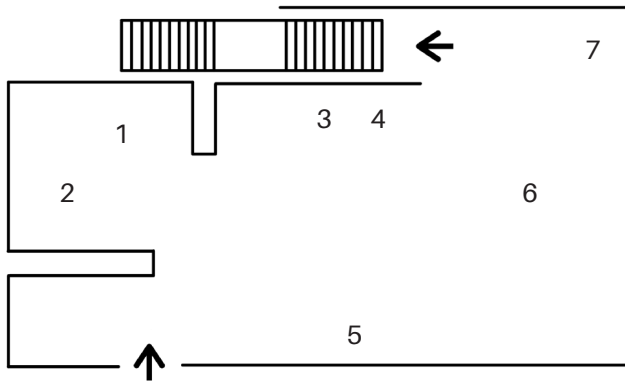


fr

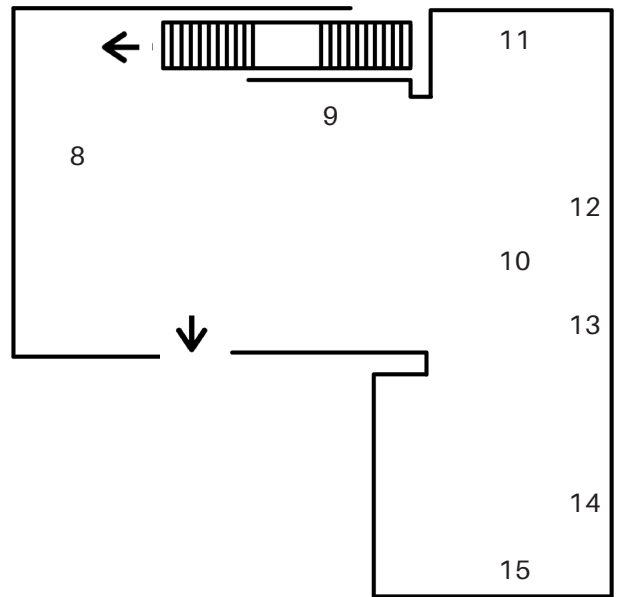
8 April 2021 - 23 April 2021
Thursdays, Fridays, Saturdays
2 pm - 6pm

<https://annemariemaes.net>

First Floor



Second Floor



detailed information on the artworks:
<https://annemariemaes.net>

- | | | | |
|---|--|----|---|
| 1 | <p>Variation Games - 2019
 infrared recorded video, sound - 12:25</p> | 8 | <p>Body I - 2021
 sculpture - 230cm x 125cm
 sensorial skins grown by bacteria,
 sphere, metal</p> |
| 2 | <p>Flow - 2021
 sculpture - 200cm x 200cm
 metal, latex, pigments, beeswax</p> | 9 | <p>Visible / Invisible - 2018
 wall hanging - 300cm x 150cm
 bacterial grown skin, worms, flies,
 mounted on cotton</p> |
| 3 | <p>berl-020516#1-8-straw - 2017
 color print on Hahnemühler paper,
 framed - 80 cm x 80cm</p> | 10 | <p>Play of Squares (4 x 4) - 2021
 sculpture - 300cm x 300cm x 18cm
 agar agar, gelatine, sand from Ostend,
 algaenat, coffee, madder root, green & brown
 algae, campêche, rhine sand, passion
 fruit peels, lemon peels, quince peels,
 bookbinders mesh</p> |
| 4 | <p>Golden Beehive - 2016
 sculpture - 35cm x 35cm x 35cm
 purified beeswax</p> | 11 | <p>Pink - 2019
 lightbox with sensorial skin - 75cm x 75cm
 bacterial grown skins, metal, led lights</p> |
| 5 | <p>Play of Squares (triple, row)- 2021
 wall hanging - 250cm x 75cm
 agar agar, gelatine, sand from Ostend,
 kurkuma, madder root, bookbinders mesh</p> | 12 | <p>Composed Grid - 2019
 lightbox with sensorial skin (grid) mounted
 on bioplastic - 75cm x 75cm
 metal, bioplastic, microbial skin, pigments,
 led lights</p> |
| 6 | <p>Table with Skins - 2016/2018
 sculpture - 150cm x 150cm x 150cm
 bacterial grown sensorial skins, organic pig-
 ments, plexi glass, metal, TL lights</p> | 13 | <p>Grid - 2018
 wall hanging - 160cm x 110cm
 bacterial grown skin, pigments</p> |
| 7 | <p>Disappearance - 2021
 sculpture - 60cm x 42cm x 42cm
 slow transformation process by bacteria,
 tangerines, lemons</p> | 14 | <p>Pollen - 2017
 Blender 3D drawing of Zucchini pollen
 B/W photograph on Hahnemühle paper -
 25cm x 25cm each</p> |
| | | 15 | <p>Exoskeleton - 2018
 Scanning Electron Micrograph of a honeybee
 skeleton piece - 215cm x 162cm
 B/W photograph on Hahnemühle paper</p> |