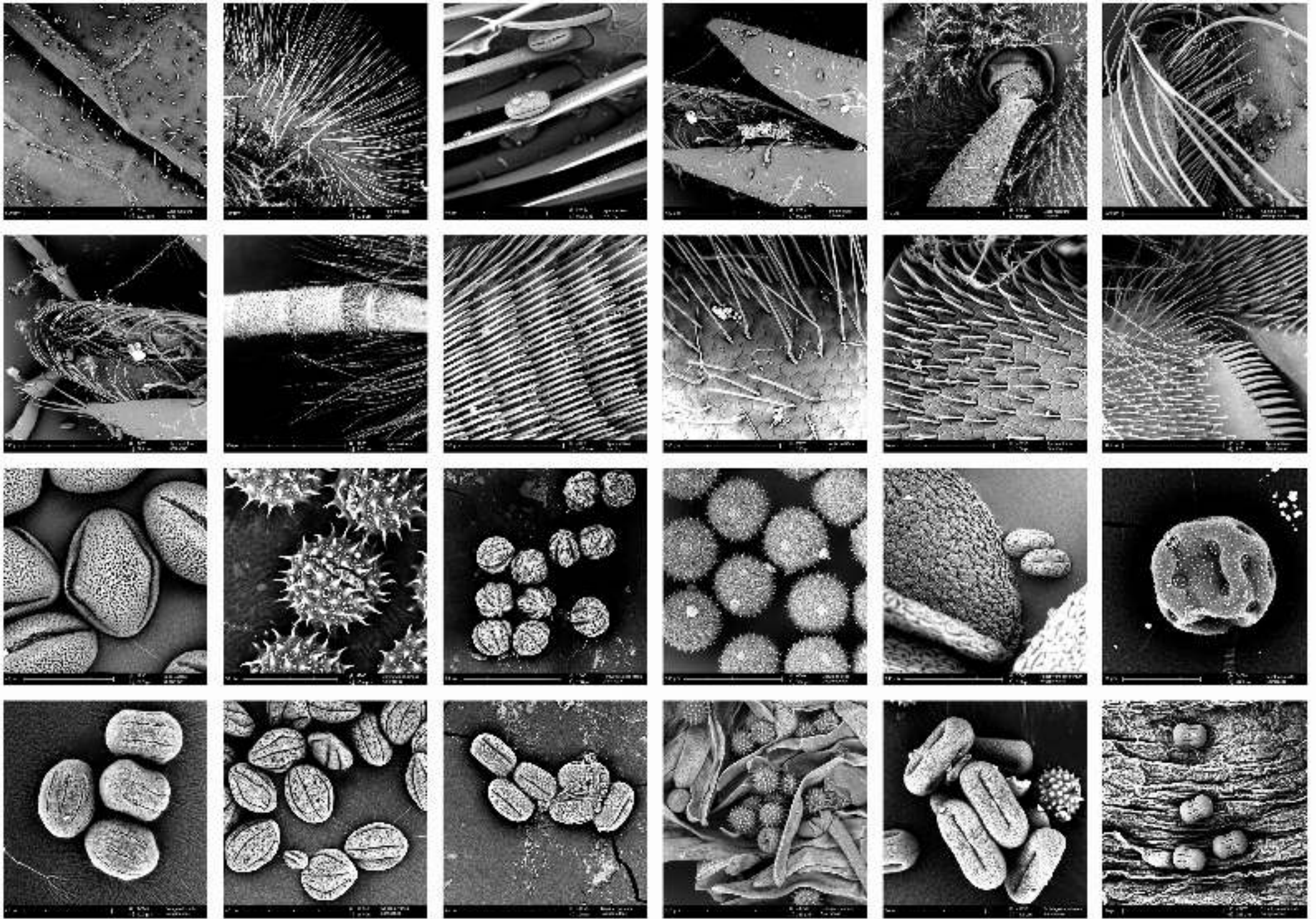


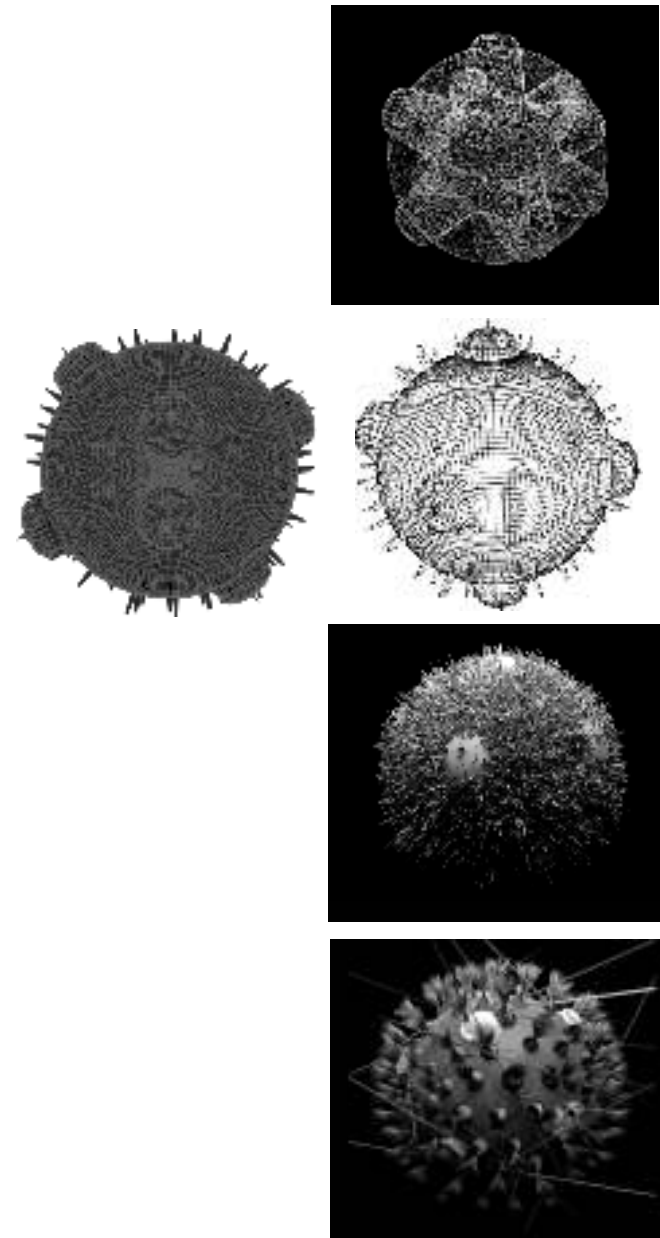
biomimetic research



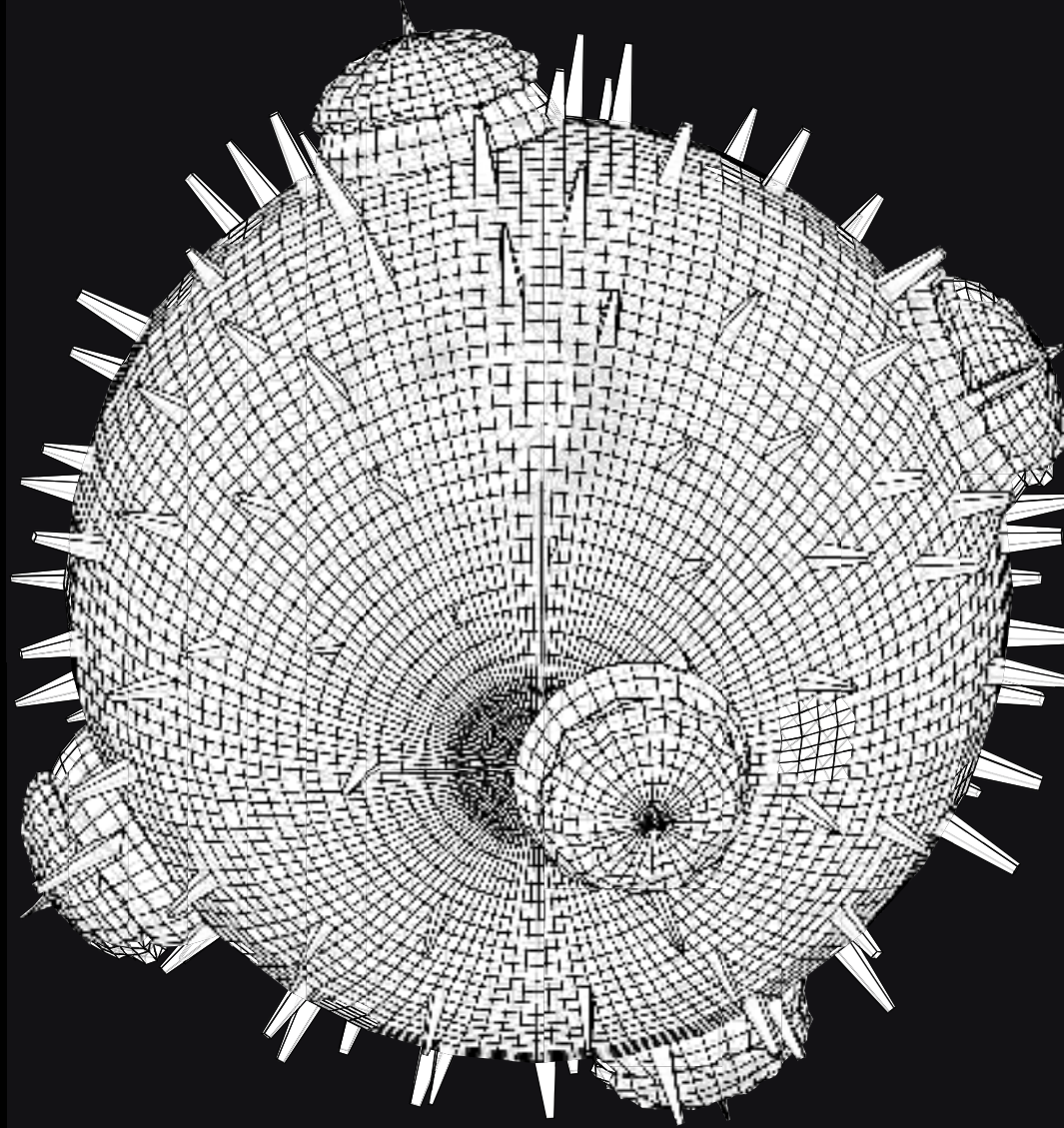
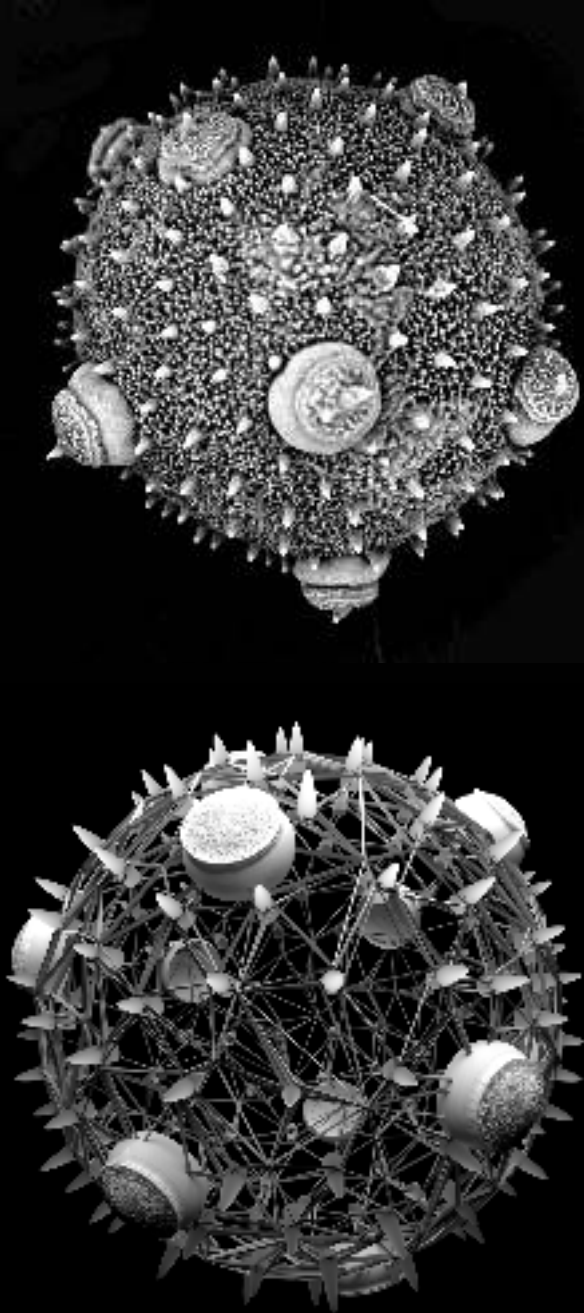
POLLEN DATABASE (2013). Pollen & bee parts study (collaboration with VUB), scanning the rooftop garden -*Hortus Experimentalis*- in the center of Brussels



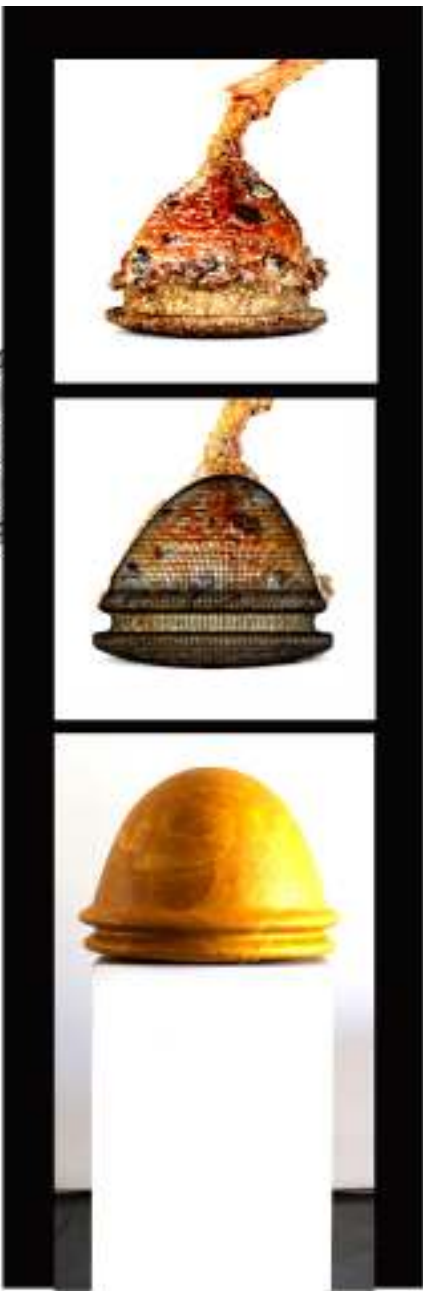
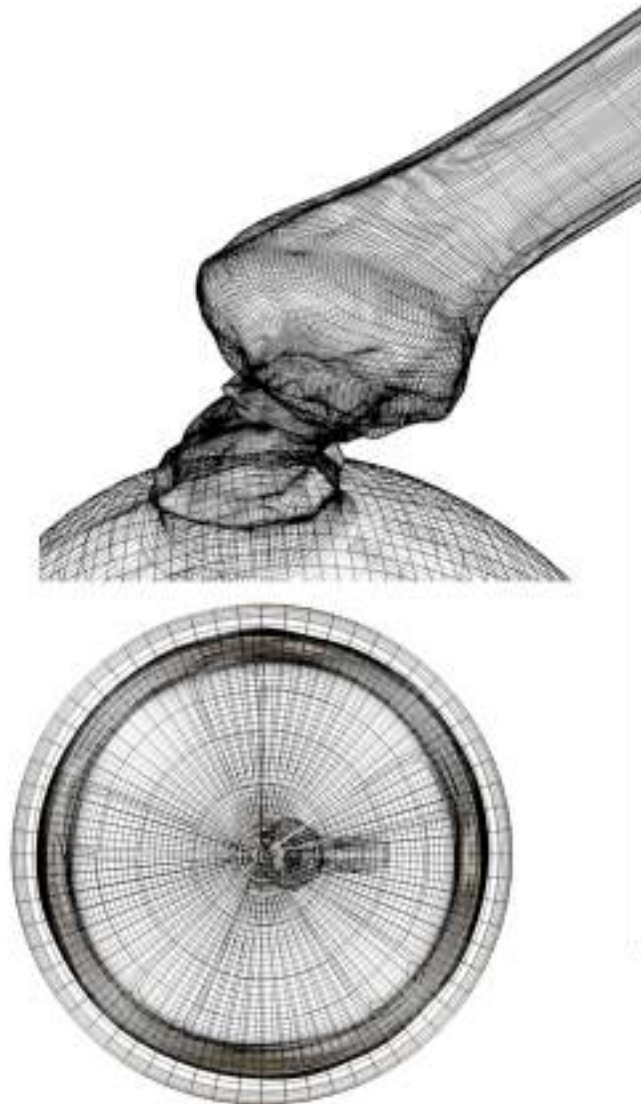
POLLEN DATABASE (2013)
male *Cucurbita pepo* (zucchini) flower, stamen with pollen
BioLab Urban Bee Lab, Brussels



STUDY FOR INTELLIGENT BEEHIVES (2015)
Biomimetic research of *Cucurbita pepo* pollen,
computer renderings



STUDY FOR INTELLIGENT BEEHIVES (2015)
Biomimetic research of *Cucurbita pepo* pollen,
computer renderings



GOLDEN BEEHIVE (2013)
Sculpture - pure beeswax

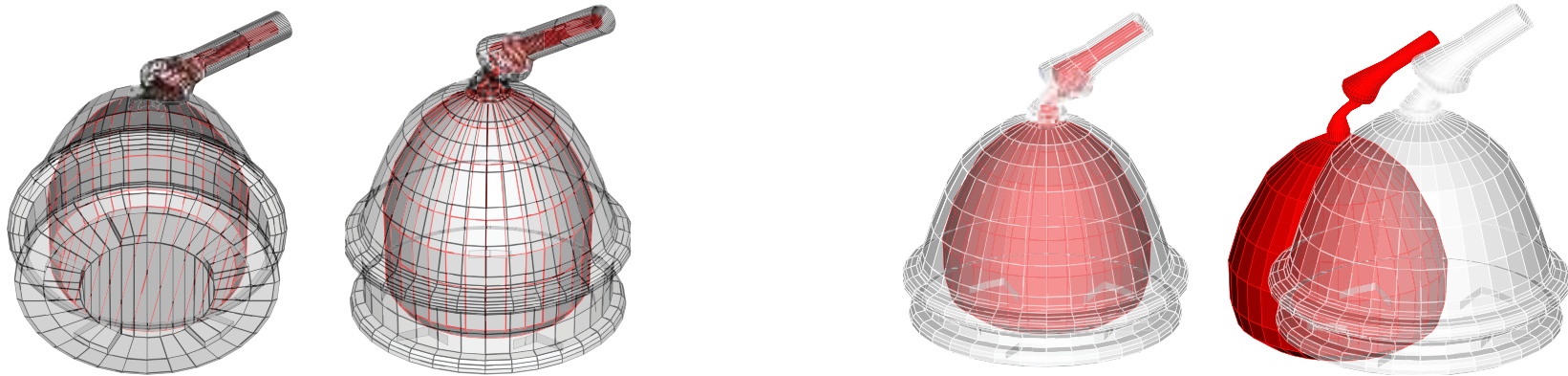
study of an *Eucalyptus* seedpod
B/W technical renderings



GOLDEN BEEHIVE (2023)
sculpture, beeswax
Alchimia Nova, la Kunsthalle, Mulhouse



STUDY FOR AN ALTERNATIVE BEEHIVE (2016)
mycelium version
Alchimia Nova, la Kunsthalle, Mulhouse



STUDY FOR A MODULAR BEEHIVE (2014)
computer drawings after a model of an eucalyptus seedpod

STUDY FOR A MODULAR BEEHIVE (2014)
3D-printed objects, felt & plexiglass
Studio, Brussels



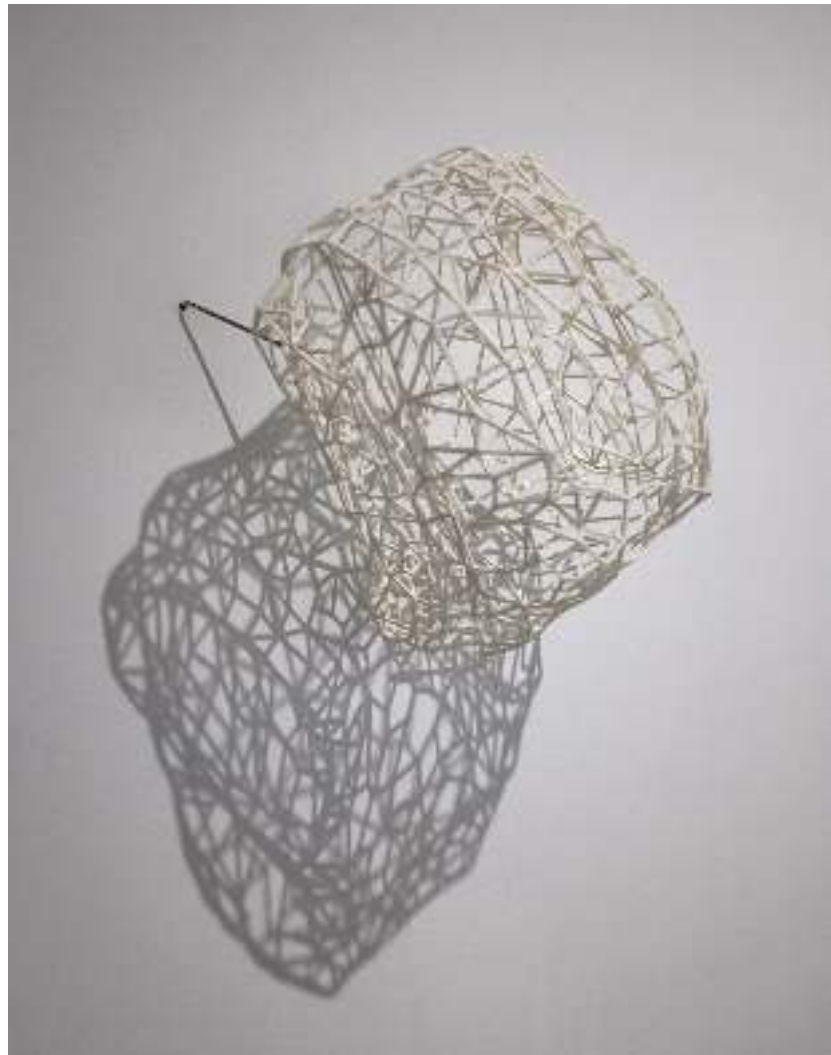


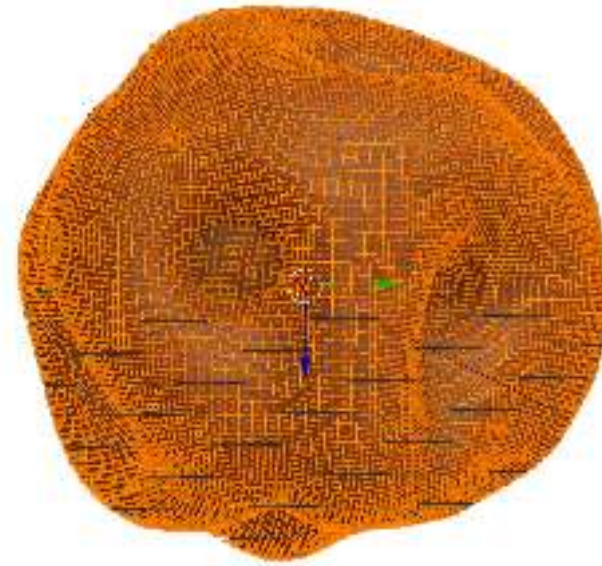
the SMELL OF THE HIVE (2023)

Perfume composed with essential oils of wax, propolis, honey, pollen, dead honey bees
Alchimia Nova, la Kunsthalle, Mulhouse

INTELLIGENT BEEHIVE (2016)

3D printed skeleton (PLA), research for 3D printing with chitosan
UN/GREEN, Museum of Modern Art, Riga





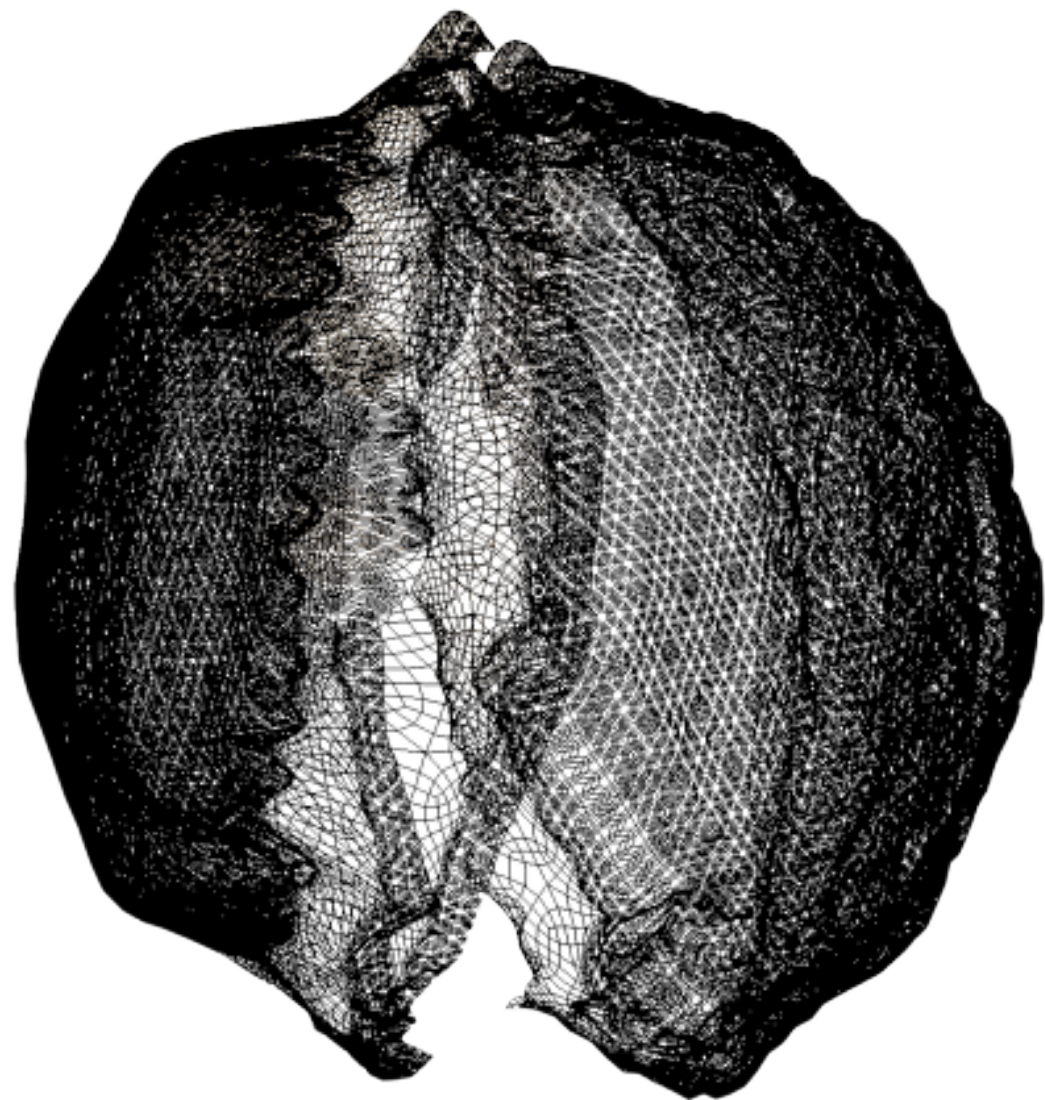
POLLEN STUDY (2023)
Research for Pollinaria,
digital design and cast objects after a model of *Mentha piperita*
Studio, Brussels



the INTELLIGENT GUERRILLA BEEHIVE (2016)

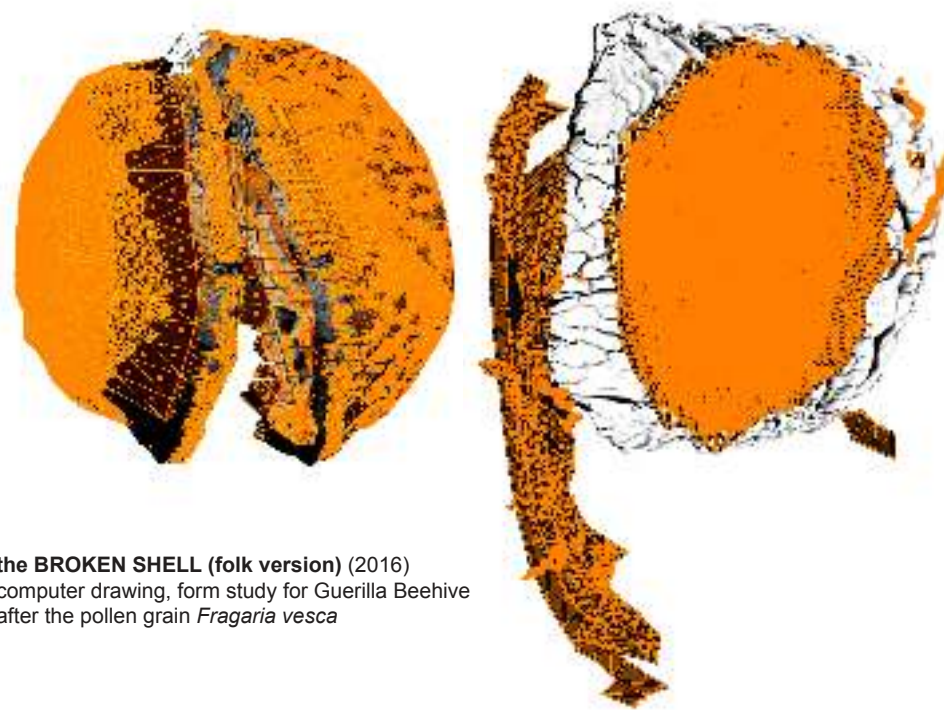
Object - structure made from organic materials, forms inspired by plant structures augmented with solar panel, micro computer and electronics, streaming setup
Alchimia Nova, la Kunsthalle, Mulhouse

the BROKEN SHELL (2016)
computer drawing, form study for Guerilla Beehive
after the pollen grain *Fragaria vesca*





the BROKEN SHELL (2016)
computer drawing, form study for Guerilla Beehive
after the pollen grain *Fragaria vesca*



the BROKEN SHELL (folk version) (2016)
computer drawing, form study for Guerilla Beehive
after the pollen grain *Fragaria vesca*



FLUID INTERFACES (2023) - interpretation of the cells of the beehive
Wax, metal, bacteria. Stone with lichen
Alchimia Nova, la Kunsthalle, Mulhouse

PLEASE TOUCH (2023)
Costumes for the durational performance a Bee is a Bee is a Bee,
Palais de Tokyo, Paris





PLEASE TOUCH - latex version (2023)
artwork for the performance a Bee is a Bee is a Bee,
Palais de Tokyo, Paris

ORGANE DE SECRETION DE LA CIRE (reine)
Nouvelles Observations sur les Abeilles, François Huber, 1768
artwork for the performance a Bee is a Bee is a Bee,
Palais de Tokyo, Paris



a BEE is a BEE is a BEE (2023)
durational performance at the Palais de Tokyo, Paris

