

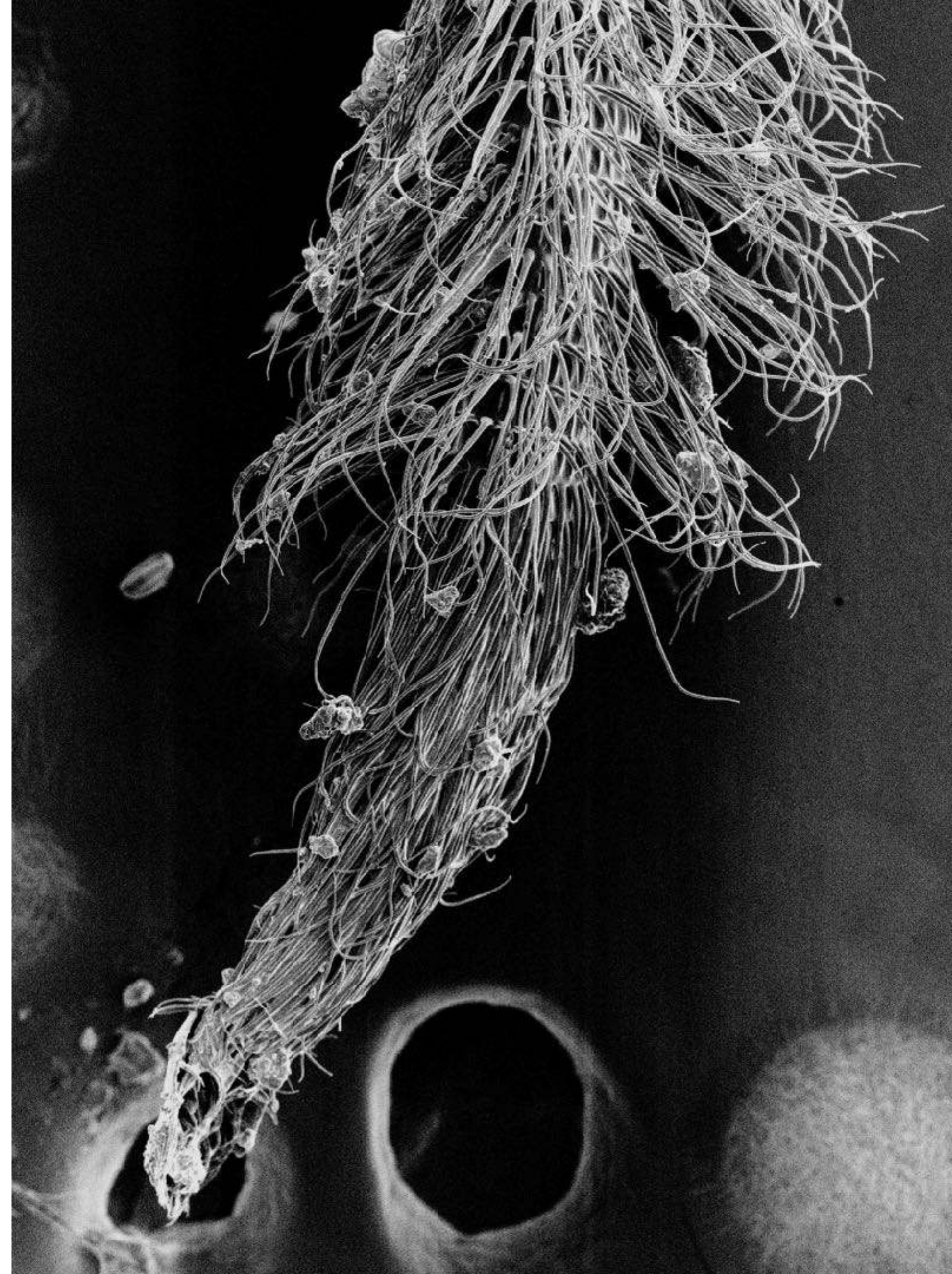
matéria de relações *matter of kinship*

an exhibition at Casa de Mateus from 15.11.2023 to 30.04.2024

Wednesday 15.11.2023 : opening with music performance, scientific talk and rhizomatic dinner

parliament of bees

Glossa (Bee Tongue)
print on fabric, 150cm x 200cm
metal bar of 160cm long and 3cm width by 3mm thickness





Crusted Lichen
print on fabric, 150cm x 200cm
metal bar 160cm x 3cm x 3mm

Helianthus annuus (sunflower)
print on fabric, 150cm x 200cm
metal bar 160cm x 3cm x 3mm



on growth and form

Sensorial Skin (yellow)
print on fabric, 150cm x 200cm
(optional)
metal bar 160cm x 3cm x 3mm

historical interaction

granite stone (historical)
stone, diameter ±
on floor before the felt

Felt (workshop)
fabric, 290cm x 130cm
(hanging from ceiling)
metal bar 140cm x 3cm x 3mm
4 clamps



Sensorial Skins are complex
surfaces of contact.

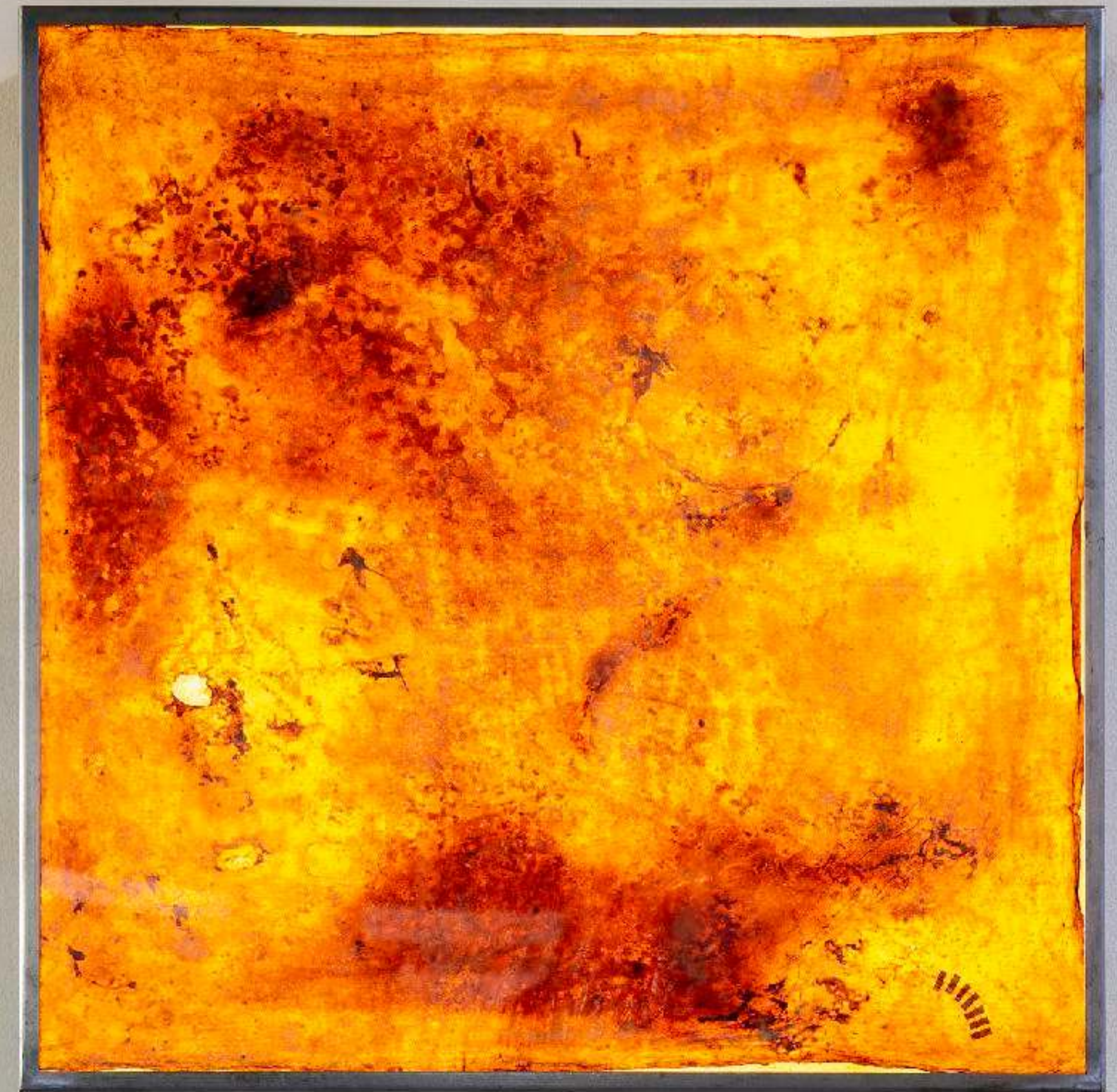
They arouse our senses
through their materiality, their
textures, their pigments and
their smells.

Some of these fabrics are
grown by bacteria, others are
the result of transformative
processes reminiscent of an
alchemical practice but now
grounded in fieldwork and
scientific methodology.

2 wall lightboxes with Sensorial Skins
80cm x 80cm

1 sensorial skin per lightbox

2 cabinets with bottom lightbox for Sensorial Skins
inside: size of cabinet





Sensorial Skins
4 items ± 80cm x 80cm
4 items on shelves in glass cabinets
1 sensorial skin per cabinet

bottom of glass cabinets:
collection of

- dried herbs etc.
- macerates of pigments in glass pots
- oak galls
- pine cones

*rethinking
materials*



Collection of custom made biomaterials:

Felt (rectangles) x 4

Biotextiles fom grapes

Biotextile from oranges

fabric, 70cm x 50cm

on metal plates

(4 plates from 100cm x 100cm,

hot rolled steel on 12mm MDF paint black)

video Alchimia Nova (13' in loop)

presented on flatscreen TV

reflecion in metal plates (on wooden support)

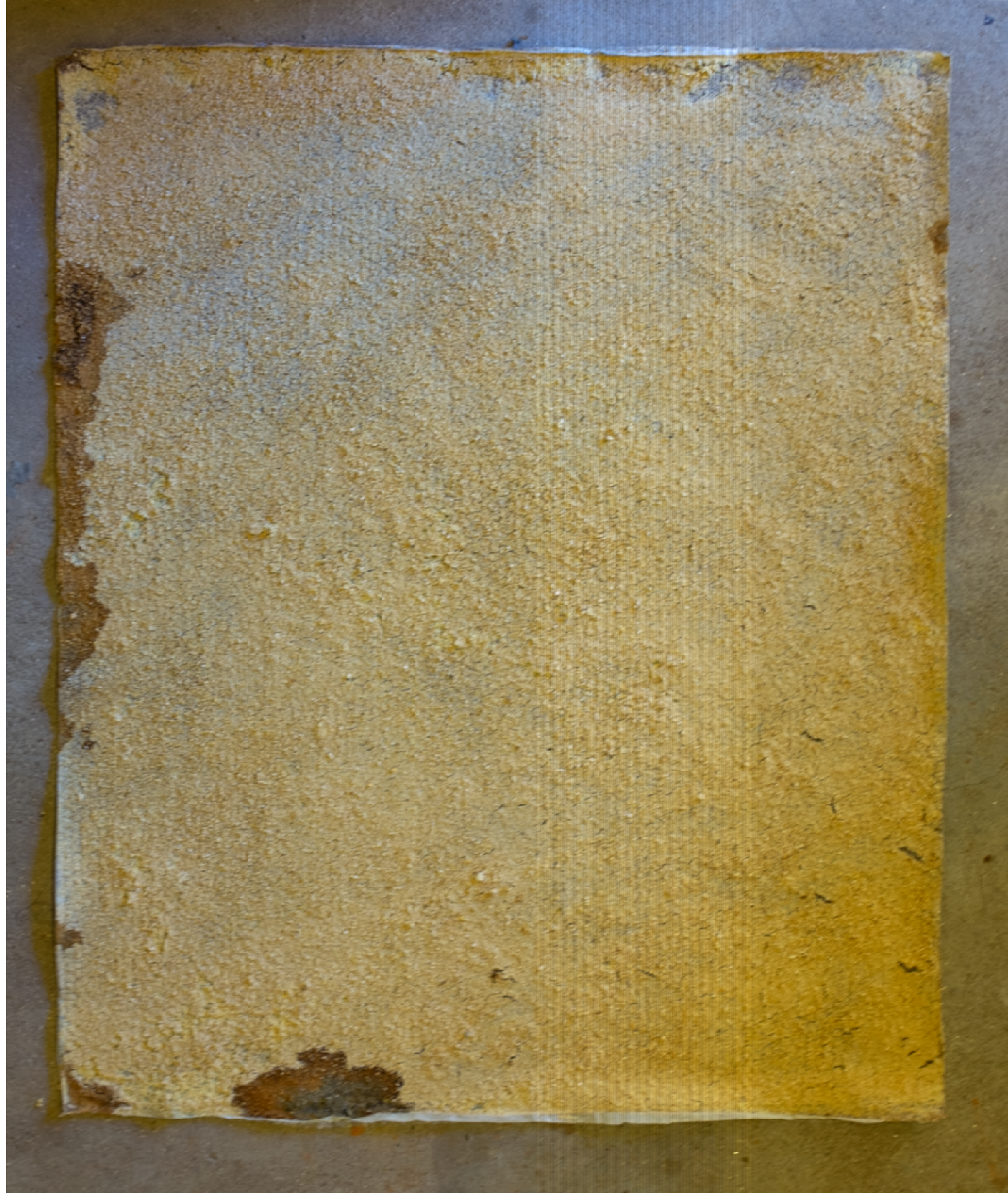


*o que
é que
as bactérias
estão a comer?*

Loci Soli
2 paintings 35cm x 56,5cm
wall

use
re-use
circular use
short use
responsible use
grape-use

Dried Orange
bio skin, 90cm x 110cm
presented on steel plates

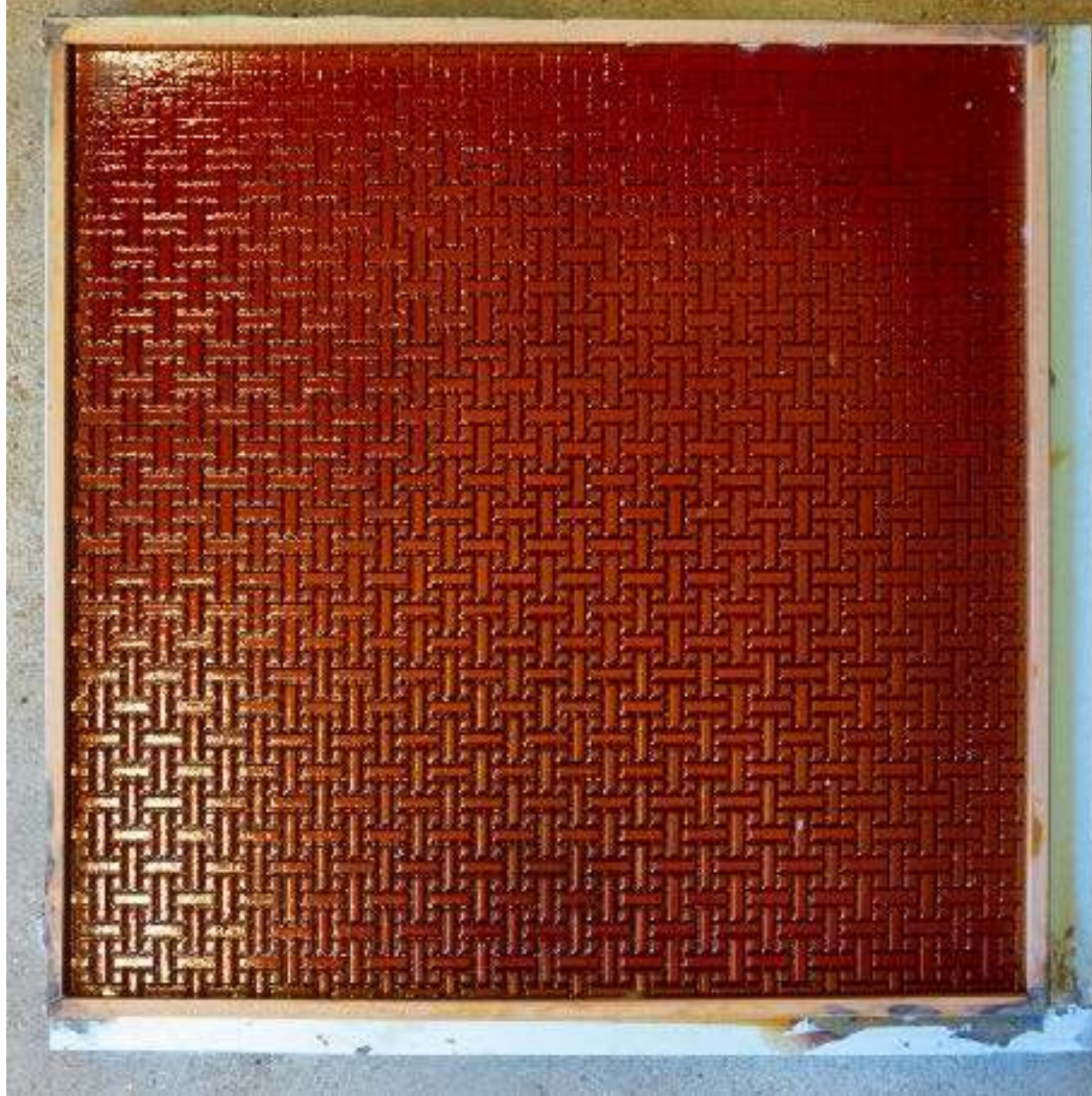
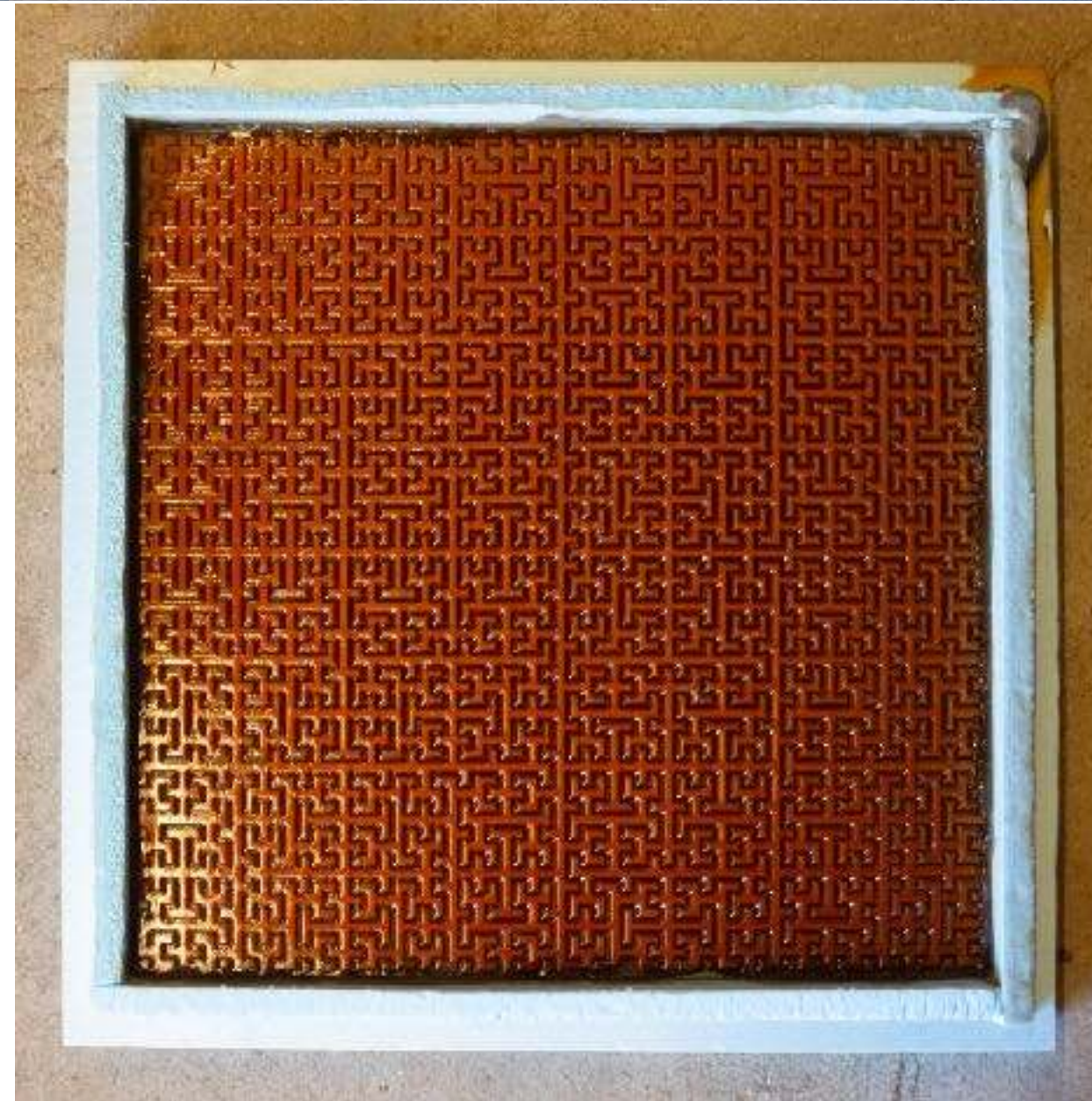


milling patterns from nature

FabLab cuts with bioplastics;
multiple organic materials
± 50cm x 50cm, 4 ex.
wall

framing needs to be finished

cherries
curcuma
madder





echoes of the trees



FabLab prints with PLA
multiple organic materials
clay pollen cluster

echoes from the trees ...

Lichen collection from Mateus
in glass cabinet
plexi boxes, 4cm x 4cm x 1cm
and 10cm x 6cm x 6cm

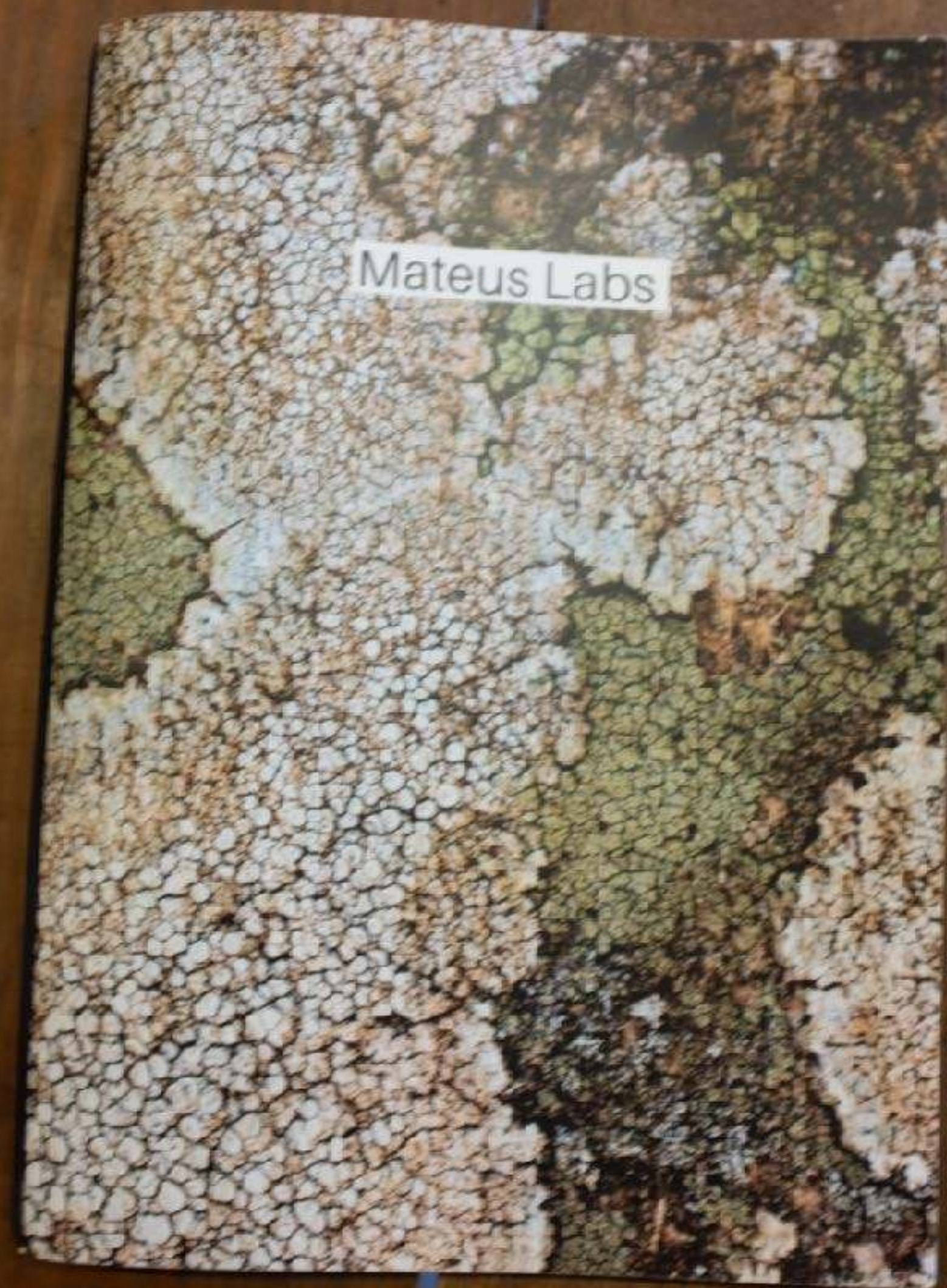
bring plexi boxes from Brussels



somos todos líquenes

*we are all lichen
murmuring matter*

matéria murmurante



artist book
Mateus Labs
43cm x 23cm